

# Dzin tonic

SOVIET EMIGRE Roman Dzindzichashvili scored 7/9 points to collect the \$15,000 first prize at the 1980 Lone Pine International. After a poor start a string of six victories put him ahead of the 23 other Grandmasters and 10 IMs also vying for the richest Swiss-system purse in the world.

Dzindzichashvili (pronounced Jin-je-hash-vili), now a resident of Israel, is famous for his all-night blitz and gambling sessions. Before one important game at Lone Pine, Dzindzichashvili was found still playing backgammon at dawn by another Soviet emigre, Anatoly Lein. Lein told "Dzin-dzin" he was playing Danish GM Bent Larsen and should be in bed. Dzindzichashvili replied: "But I slept last week!"

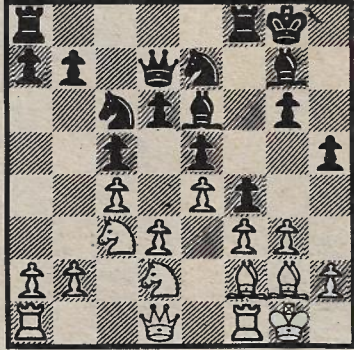
Second place and \$10,000 went to GM Tony Miles from England on 6½, followed by Larsen, Geller (USSR), Alburt (US), Balashov (USSR) and Gheorghiu (Rom) on six points.

## LONE PINE 1980

<b>P. BIYIASAS</b> (Canada)	<b>R. DZINDZICHASHVILI</b> (Israel)
1. Nf3	c5
2. g3	Nc6
3. Bg2	g6
4. 0-0	Bg7
5. c3	e5
6. e4	Nge7
7. d3	0-0
8. Be3	d6
9. Nfd2?!	

Biyiasas is fond of these non-committal opening systems for White, but this move, and his next, are just too passive. Better was 9.Na3.

9. ...	Be6
10. c4?	f5
11. f3	Qd7
12. Nc3	f4
13. Bf2	h5



Black's single-minded refutation of White's poor opening play in this game is instructive.

14. Nd5	g5
15. Nb1	Ng6
16. Nbc3	Rf7
17. Kh1	Raf8
18. Ne2	g4
19. Ng1	f×g3
20. h×g3	h4
21. Kh2	Nd4
22. B×d4	h×g3 ch
23. K×g3	Qd8!

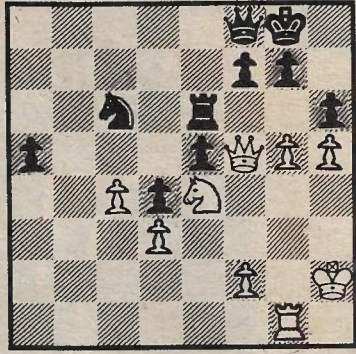
A zwiischensug threatening 24...Qh4 mate.

24. Kf2	e×d4
25. Ke1	B×d5
26. c×d5	Qh4 ch
27. Kd2	Nf4
28. Resigns	

The slaughter ends — White must lose his bishop on g2.

\* \* \*

GELLER



MILES

White to play  
By sacrificing a queenside pawn Miles has built up a promising attack in the last round at Lone Pine against Geller. Can you find the \$10,000 move to win material and ultimately the game?

Solution: 1.Nf6ch! g×f6 2.g×h6 K×g7 3.Q×g7 4.f×g7ch K×g7 White would have difficulty winning. Now Miles infiltrates with his Queen. 2...Kh8 3.Rg7! winning the Queen because of the threat of 4.Qh7 mate! 3...Q×g7 4.h×g7ch K×g7 5.Qg4ch Kh7 6.h6! K×h6 7.Qg8 Re7 8.Qc8 Re6 9.Qh8ch Resigns.

MURRAY CHANDLER